

# PROXIMITY ALUMINIZED SUIT DATA SHEET

**FIREFIGHTING**

**GARMENT**



# PROXIMITY ALUMINIZED SUIT DATA SHEET

**Model: BDFE900**

- **Overjacket and Shroud:**

- The overjacket and shroud incorporating front closure, elasticated cuff, back piece for SCBA, with thermal barrier.
- Outer Shell: Aluminized material consists of 2 (two) layer of aluminium foil (double layer system), 1 (one) layer protective film, 1 (one) layer heat stable adhesive, 1 (one) layer % 100 glass fabric based woven material layers. The weight is approx 500 g/m<sup>2</sup>. The fabric is tested according to the EN 531 AB2C3E1, EN 407, EN 1486, ISO 11612 A1B1C4. This is tested by independent and accredited laboratory.
- Thermal Barrier: The heat barrier consists of an aramid felt quilted to an inner lining. The felt is 100% aramid. Total weight of the felt is at least 100 g/m<sup>2</sup>. The inner lining is at least 100 g/m<sup>2</sup>.
- Front Closure: A left side located metal one way closed end zip, concealed by a main fabric storm flap made from 2 layers of main fabric with heat barrier enclosed.
- Front Part Of Shroud: There is a front aperture in the shroud measuring 23x12 cm which is fitted with a detachable gold plated polycarbonate face visor. This gold plated visor reflects the radiant heat. There are two glass fiber reinforced frames to provide wide view through the gold plated visor in between.
- **Helmet:** There is an EN 397 certified helmet inside of the shroud. There is a F.R. touch and close fastener with one side adhesive on top of the helmet to fix it to the inner lining of the shroud.
- **Seams:** All seams are constructed using heavy gauge Para-Aramid thread. Stress points are bartacked for better strength.
- KEVLAR® knitted cuffs (can be attached to the thumbs), designed to prevent the liquids and burning particles to go through in.

- **Gloves:**

- Description: The five finger gloves consist of aluminized outer fabric and heat barrier. The palm area is made out of Para-Aramid fabric.
- Seams: All seams are constructed using heavy gauge Para-Aramid thread.





# PROXIMITY ALUMINIZED SUIT DATA SHEET

**Model: BDFE900**

- **Overtrousers:**

- The overtrousers incorporating heavy duty elastic braces with quick release buckles, elasticated waist, with thermal liner.
- Outer Shell: Aluminized material consists of 2 (two) layer of aluminium foil (double layer system), 1 (one) layer protective film, 1 (one) layer heat stable adhesive, 1 (one) layer % 100 glass fabric based woven material layers. The weight is approx 500 g/m<sup>2</sup>. The fabric is tested according to the EN 531 AB2C3E1, EN 407, EN 1486, ISO 11612 A1B1C4. This is tested by independent and accredited laboratory.
- Thermal Barrier: The heat barrier consists of an aramid felt quilted to an inner lining. The felt is 100% aramid. Total weight of the felt is at least 100 g/m<sup>2</sup>. The inner lining is at least 100 g/m<sup>2</sup>. The heat barrier runs throughout the trousers from waist to the end of leg hems.
- Braces: Attached to the rear of the trousers waist with heavy duty F.R. Para-Aramid thread, the braces are permanently crossed over at the rear. The front of the brace is running through a high density plastic male part, quick release buckle, which affixes into the female part. The male part of the buckle is the means of brace length adjustment.
- Hem: Both leg hems are elasticated.
- Seams: All seams are constructed using heavy gauge Para-Aramid thread. Stress points are bartacked for better strength.

- **Gaiters:**

- Description: The gaiter is used to cover the appropriate boot. The boot is not a part of this suit. It is sold separately.
- Gaiter: The appropriate boot is covered with a gaiter consisting of aluminized outer fabric and heat barrier. The heat barrier runs throughout the gaiter from sole to the top of the gaiter. All seams are constructed using heavy gauge Para-Aramid thread.

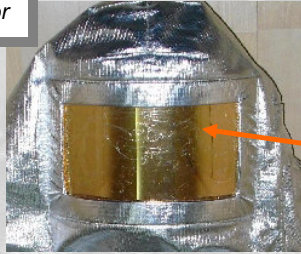


# FIREFIGHTING

# GARMENT

## PROXIMITY ALUMINIZED SUIT DATA SHEET

*Detachable Gold Plated  
Polycarbonate Face Visor*



A left side located metal one way closed end zip, concealed by a main fabric storm flap enclosed, running from the shoulder seam to the garment hem



Elastic Belts at  
the hem of the  
jacket





**FIREFIGHTING**

**GARMENT**

# PROXIMITY ALUMINIZED SUIT DATA SHEET

*Back Piece For SCBA*



*KEVLAR® knitted cuffs  
(can be attached to the  
thumbs), designed to  
prevent the liquids and  
burning particles to go  
through in*

*Elastic Belts at  
the hem of the  
jacket*



**BULL** Dozer



# FIREFIGHTING

# GARMENT

## PROXIMITY ALUMINIZED SUIT DATA SHEET

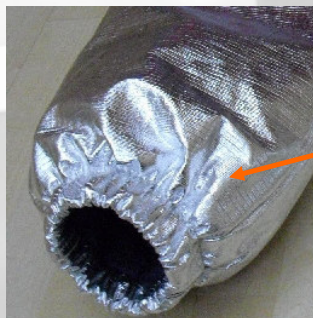
Attached to the rear of the trousers waist with heavy duty F.R. Para-Aramid thread, the braces are permanently crossed over at the rear.



Front opening with a FR velcro and a single stud



Elasticated Leg hems





**FIREFIGHTING**

**GARMENT**

# PROXIMITY ALUMINIZED SUIT DATA SHEET

